

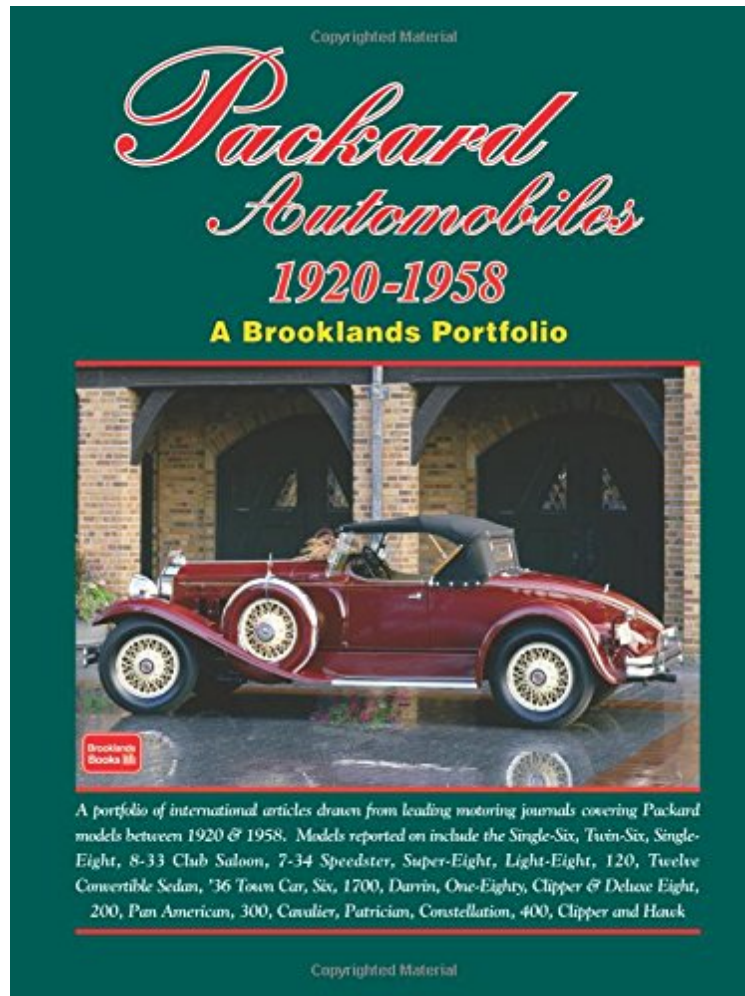
Name: 1855209217296 pages | File size: 52.Mb

[Download PDF](#)

[Read Online](#)

R.M. Clarke

*audiobook / *ebooks / Download PDF / ePub / DOC*



(Mobile book) Packard Automobiles 1920-1958: A Brooklands Portfolio

Packard Automobiles 1920-1958: A Brooklands Portfolio

R.M. Clarke : Packard Automobiles 1920-1958: A Brooklands Portfolio before purchasing it in order to gage whether or not it would be worth my time, and all praised Packard Automobiles 1920-1958: A Brooklands Portfolio:

A portfolio of international articles drawn from leading motoring journals covering Packard models between 1920 1958. Models reported on include the Single-Six, Twin-Six, Single- Eight, 8-33 Club Saloon, 7-34 Speedster, Super- Eight, Light-Eight, 120, Twelve Convertible Sedan, '36 Town Car, Six, 1700, Darrin, One-Eighty, Clipper Deluxe Eight, 200, Pan American, 300, Cavalier, Patrician, Constellation, 400, Clipper and Hawk