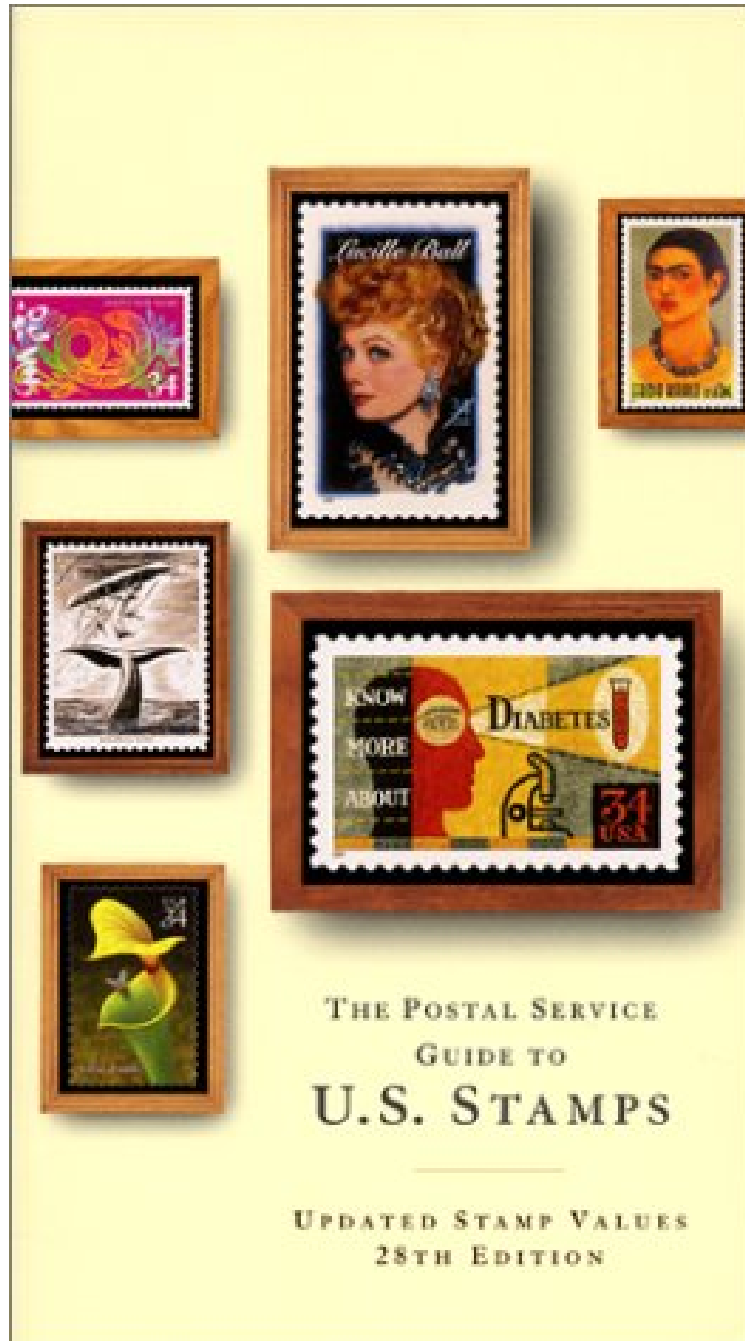


Name: 0060958553624 pages | File size: 19.Mb



United States Postal Service
*ePub | *DOC | audiobook | ebooks | Download PDF*



(Ebook pdf) The Postal Service Guide to U.S. Stamps 28th Ed.

The Postal Service Guide to U.S. Stamps 28th Ed.

United States Postal Service : The Postal Service Guide to U.S. Stamps 28th Ed. before purchasing it in order to gauge whether or not it would be worth my time, and all praised The Postal Service Guide to U.S. Stamps 28th Ed.:

0 of 0 people found the following review helpful. StampsBy Carla stefaniBought this to find back of the book stamps ad values to keep track of stamps I was buying. Did the trick

The only fully illustrated, four-color guide to U.S. stamps, this official publication provides the most comprehensive information available about the U.S. stamp program and its vivid history. Commencing with the first stamps released in 1847, The Postal Service Guide to U.S. Stamps covers nearly 4,000 stamps issued up to the present, as well as: Every category of U.S. stamp-definitive, commemorative, airmail, special delivery, duck stamps, stamped envelopes, and more -- all organized into easy-to-use, color-coded sections for quick access Detailed listings for each stamp, with color illustrations, Scott catalog numbers, descriptions, dates of issue, used and unused prices, quantities issued (when known), and separate listings for design variations A complete guide to the new 2001 commemorative stamp program How to get started collecting, with everything you need to know -- from advice on assessing the condition and value of your stamps to organizing, displaying, and preserving your collection A resource section listing philatelic organizations, publications, museums, and official philatelic centers in every state A glossary of important terms And much more!

About the Author John E. Potter is the Postmaster General and Chief Executive Officer of the United States Postal Service. James L. Bruns is Director of the National Postal Museum, Smithsonian Institution, located in Washington, DC.